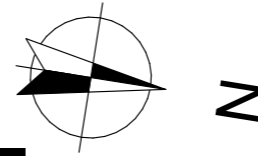


LES BORÉALES

DE SAINT-PRYVÉ

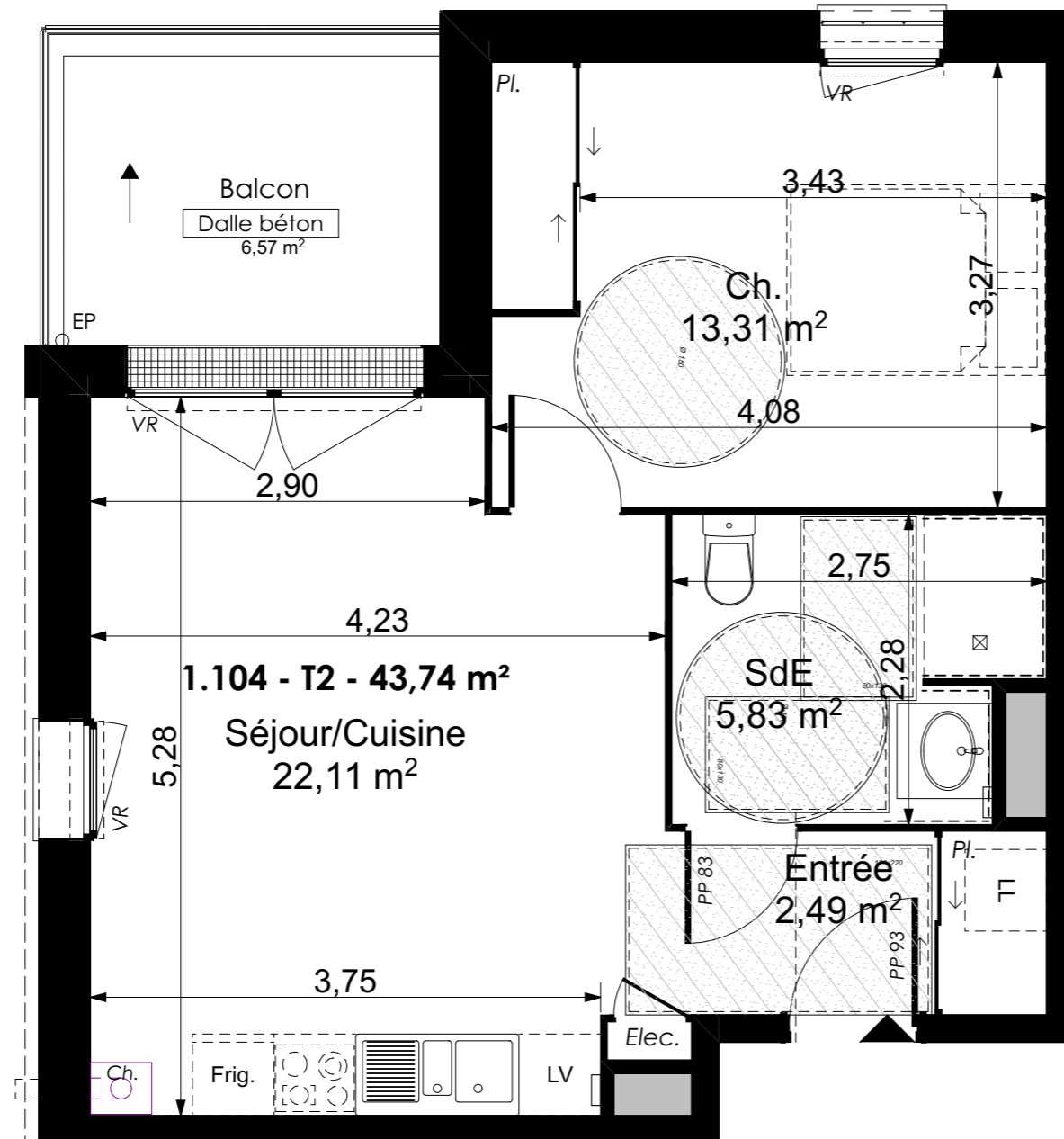


Valloire Habitat 

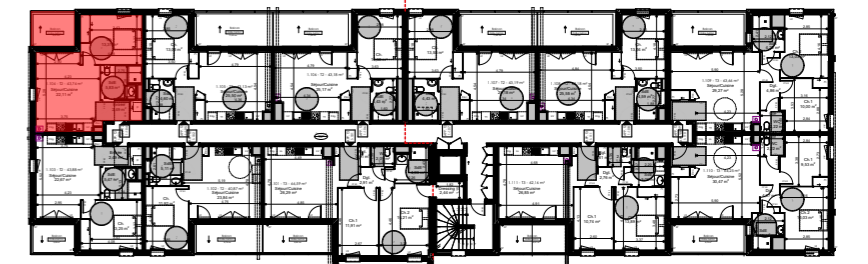
Groupe ActionLogement

28 bis rue du Gros Raisin
45750 SAINT-PRYVE-SAINT-MESMIN

Les BoRéales de Saint-Pryvé



TYPE T2 - LOGEMENT 1-104 R+1		
Séjour/Cuisine		22,11 m ²
Entrée		2,49 m ²
SdB		5,83 m ²
Ch. 1		13,31 m ²
Total surfaces habitables		43,74 m ²
Annexes		Surf. Utile
Balcon		6,57 m²
Total surfaces Annexes		6,57 m ²
	TOTAL SURFACES	50,31 m ²



15/11/2022	Indice C
Ech : 1:50	
0.00	0.50 1.00 2.00 3.00
